

## Ubuntu Wireless Device Setup

Before wireless connections can be made using the **Linksys WUSB54G** device, there are some steps that must be followed to setup the wireless device configurations. This is due to some strange interaction between the wireless device driver the Ubuntu OS.

Configuring the Linksys WUSB54G Wireless Adapter:

**Step 1.** Shutdown the Ubuntu OS on the PC-BOT if it is running

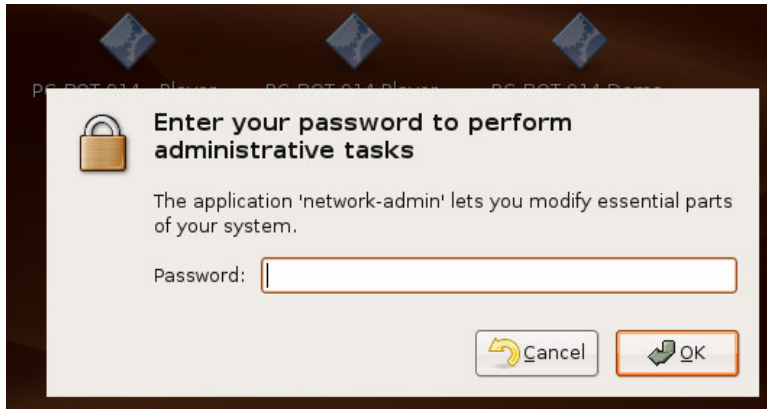
**Step 2.** Unplug the WUSB54G USB connector and restart PC-BOT

**Step 3.** After boot-up, plug in WUSB54G USB connector.

**Step 4.** In the Ubuntu desktop menu, open System -> Administration -> Networking



You will need to enter the administrative password which is 'wbr'.



**Step 5a.** Ensure Wireless Connection is deactivated. If it is 'deactive', go to Step 6.

**Step 5b.** Otherwise, if it is active, click the 'Deactivate' button then click OK. Return back to **Step 1**. You won't be able to configure (change the properties) of this device when it is active, as it will cause the OS to freeze.



**Step 6.** After clicking on the wireless device to highlight it, click on the 'Properties' button and enter your wireless network configuration settings.

**Step 7.** Click 'OK' to accept the changes, then click OK to exit Networking Settings.

**Step 8.** Shutdown the Ubuntu OS of the PC-BOT

**Step 9.** Unplug the WUSB54G USB connector and restart the PC-BOT without the wireless device connected.

**Step 10.** After boot-up, plug in the WUSB54G USB connector.

**Step 11.** In the Ubuntu desktop menu, open System -> Administration -> Networking. Again enter the administrative password of 'wbr'

**Step 12.** Highlight the Wireless connection and click the 'Activate' button.

**Step 13.** Click 'OK' and the device should attempt to connect to your wireless network.

**Whenever you wish to change your wireless network settings you will need to follow these steps in order to do so.**