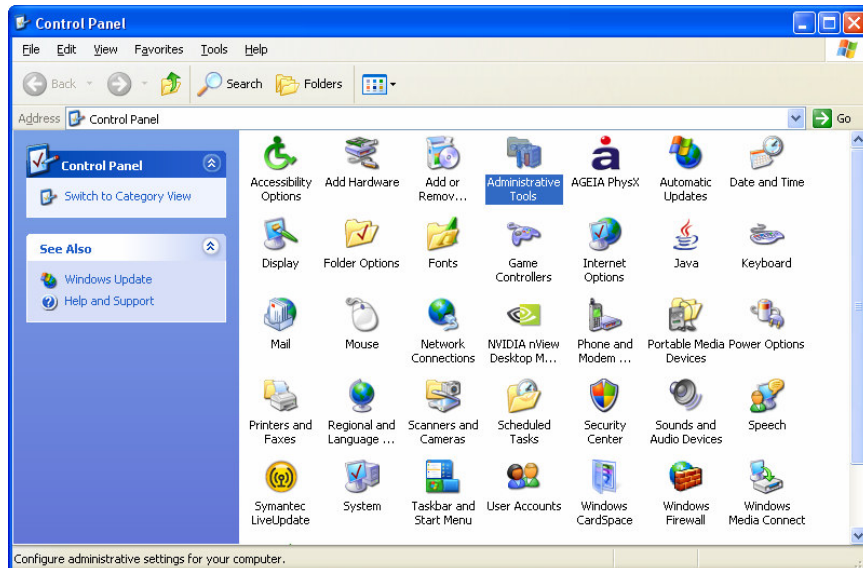


.NET Components Upgrade from BRIAN

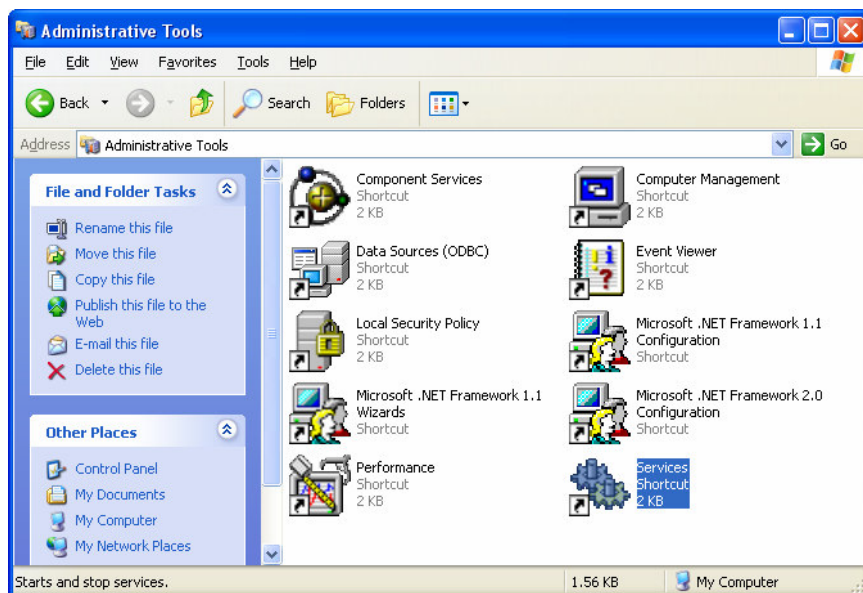
To remove the BRIAN components completely from your system, proceed to **Step 9**.

To start using the new .NET Components on an existing system with BRIAN already installed, you will need to follow these steps:

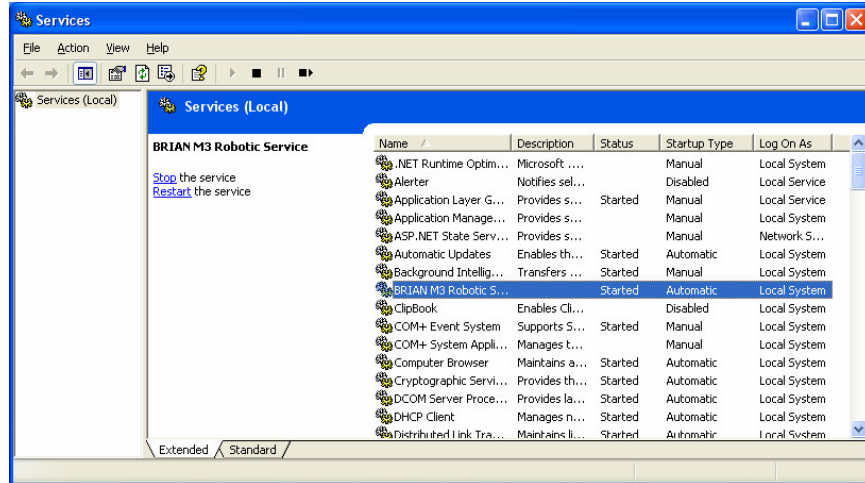
Step 1 – Open the Windows Control Panel.



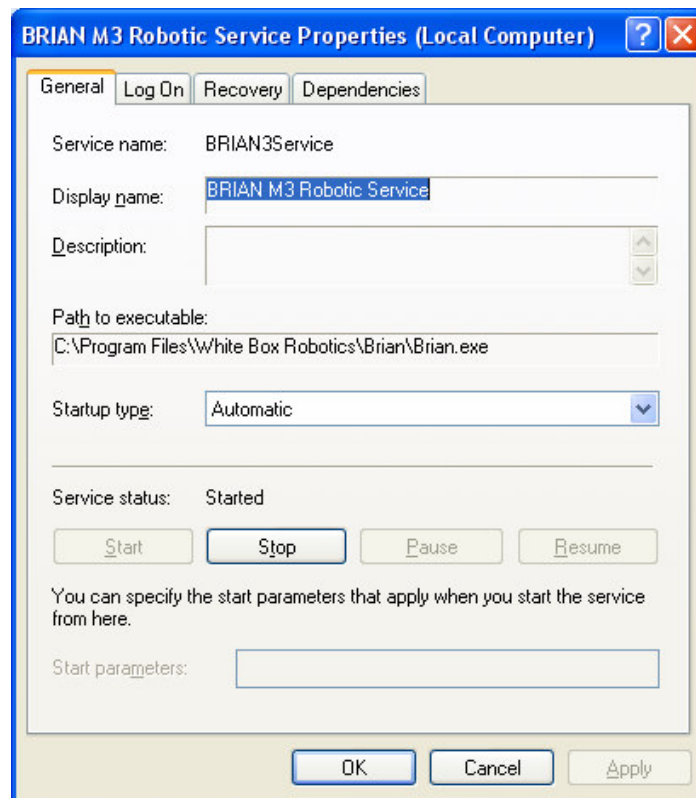
Step 2 – Double click the 'Administrative Tools' icon.



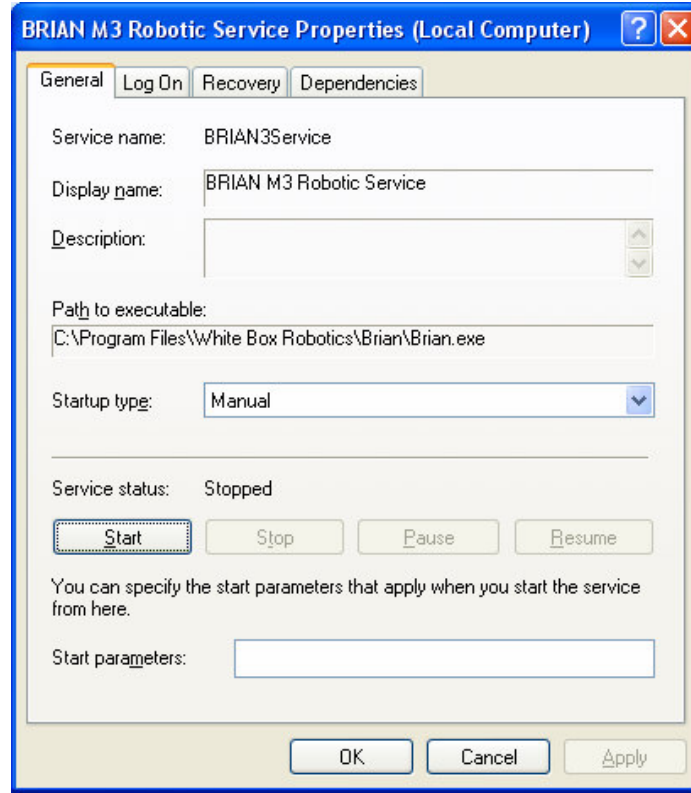
Step 3 – Double click the ‘Services Shortcut’. Locate the BRIAN M3 Robotic Service.



Step 4 – Highlight the service and click the right mouse button, choosing ‘Properties’.



Step 5 – Click on ‘Startup type’ and select ‘Manual’, then click on the ‘Stop’ button.



Step 6 – Install the PC-BOT .Net components (PC-BOT_dotNet_Setup.msi) located on the Support section of the White Box Robotics webpage:

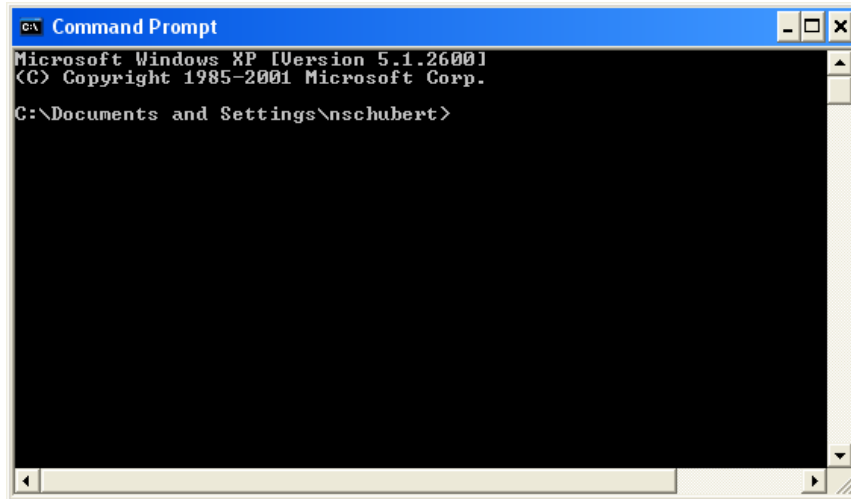
<http://www.whiteboxrobotics.com/>

Step 7 – Download the ‘.NET PC-BOT user manual’ from the .NET support section of the White Box Robotics webpage use it as a reference.

Step 8 – If you want to use BRIAN GUI again you will need to ‘Start’ the service each time you want to use it and STOP it before you try and use the .NET Component applications.

To remove the BRIAN components completely, follow these steps:

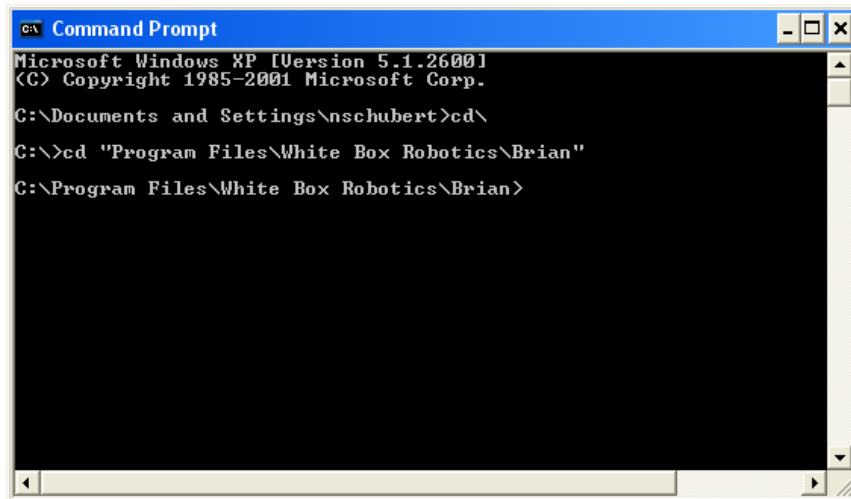
Step 9 – Open a ‘Command Prompt’ window.



```
Command Prompt
Microsoft Windows XP [Version 5.1.2600]
(C) Copyright 1985-2001 Microsoft Corp.

C:\Documents and Settings\nschubert>
```

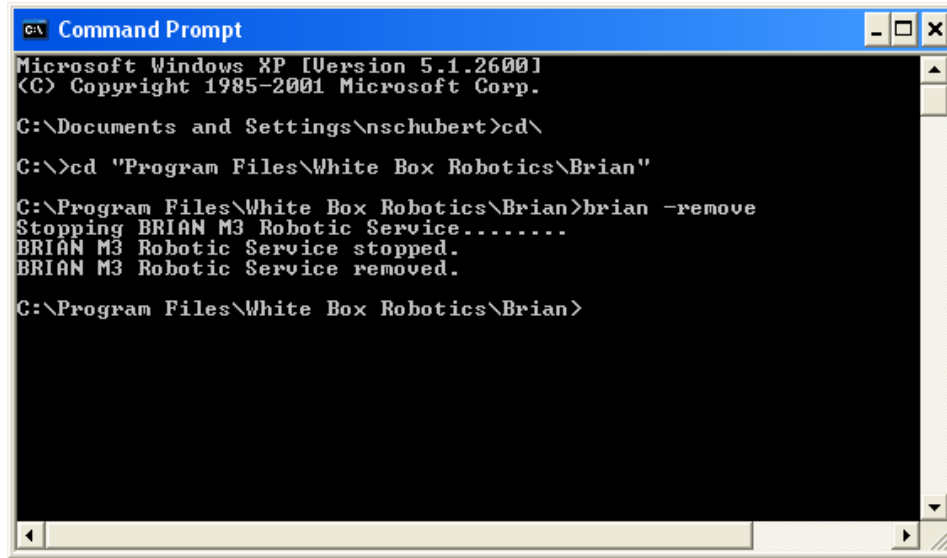
Step 10 – Go to the Brian folder located at “c:\Program Files\White Box Robotics\Brian”



```
Command Prompt
Microsoft Windows XP [Version 5.1.2600]
(C) Copyright 1985-2001 Microsoft Corp.

C:\Documents and Settings\nschubert>cd\
C:\>cd "Program Files\White Box Robotics\Brian"
C:\Program Files\White Box Robotics\Brian>
```

Step 11 – Type ‘Brian –remove’ and hit enter.



```
Microsoft Windows XP [Version 5.1.2600]
(C) Copyright 1985-2001 Microsoft Corp.

C:\Documents and Settings\nschubert>cd\

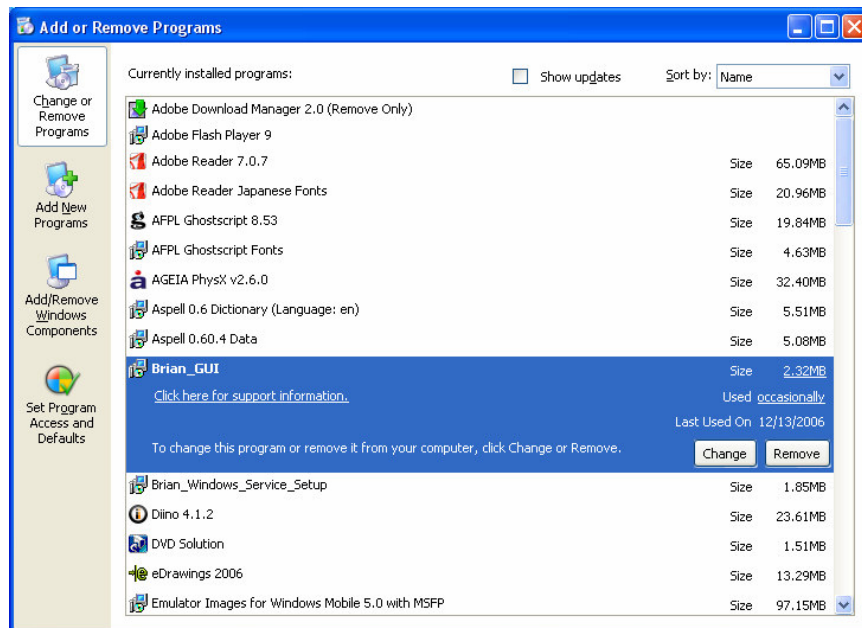
C:>cd "Program Files\White Box Robotics\Brian"

C:\Program Files\White Box Robotics\Brian>brian -remove
Stopping BRIAN M3 Robotic Service.....
BRIAN M3 Robotic Service stopped.
BRIAN M3 Robotic Service removed.

C:\Program Files\White Box Robotics\Brian>
```

You will see that the Brian service has been stopped and removed.

Step 12 – Open Windows Control Panel and Add or Remove Programs. Click on the ‘Brian_GUI’ then on ‘Brian_Windows_Service_Setup’, and click the Remove button.



Step 13 – Again, if not already done, install the PC-BOT .Net components (PC-BOT_dotNet_Setup.msi) located on the Support section of the White Box Robotics webpage: <http://www.whiteboxrobotics.com/>

Step 14 – Download the ‘.NET PC-BOT user manual’ from the .NET support section of the White Box Robotics webpage use it as a reference.